

Light Kit Instructions

for attachment to chipboard "Gingerbread" House

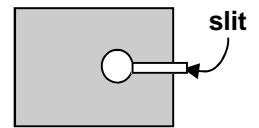
If you are lighting your house use only C5 or C7 light bulbs.
These are the same kind used in night lights.

Do not use chandler light bulbs as they may get too hot and could pose a fire danger.

PREPARING THE BASE:

You will need: 1-C5 or C7 single light & Styrofoam base that measures at least 4¼" x 5¾ x ½"
(Light Kit CHL-00)

- Measure the base of your house. Not all the kits are the same size.
- Cut Styrofoam to fit into the base of your house (about ¼" smaller than the base of house).
- Cut a 1 ½" circle exactly in the middle of the Styrofoam. This is where the light will go and you do not want it too close to the sides.
- Determine which way your house is going to sit on the base. It is important to know if your house will use the narrow end as the front and back or the wider end.
- Starting at the cut-out and continuing to the **back** edge of the Styrofoam, cut a ¼" wide slit. This will accommodate the light cord will go. (**fig. 1-a**)



Test light before attaching to base to insure it is working properly.

- Apply liberal amount of adhesive to bottom of Styrofoam and attach to cardboard base.
- Attach light to Styrofoam by pressing clips into the hole and pressing the cord gently into the slit.

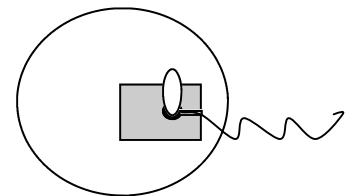


Fig. 1-b

ATTACHING HOUSE TO BASE:

You will need: Completed house (without roof attached), trim, prepared base including the trim tacky glue.

- Apply a liberal amount of adhesive to bottom of house.
- Place house over Styrofoam and press in place.
- Allow adhesive to set before adding embellishments to base.

Always replace bulb with C5 or C7 bulb. Again, **do not** use household light bulbs as they may get too hot and could pose a fire danger



Retired...Let's Do Lunch, LLC

Glendale, CA 91201 ~ 818-261-0021 ~ info@retiredletsdolunch.com